

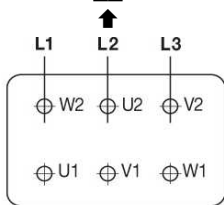
Schema di collegamento - *Connection diagram* - Schemas de branchement - *Schaltplan* - Esquemas de conexiòn

**cemp**  
Flameproof  
Motors

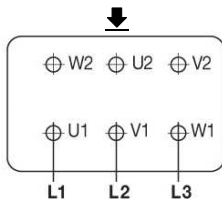
DTE 01/01/2004  
SC-32-F-ams-2v-2a

**Motori autofrenanti, trifase due velocità, due avvolgimenti -  
Brake motors, three phase, two speeds, two windings - Moteurs avec frein, triphasé, deux vitesses, deux enroulements - Drehstrom-Bremsmotor, zwei Drehzahlstufe, Zwei Wicklungen -  
Motores autofrenantes, trifásico dos velocidades, dos bobinados**

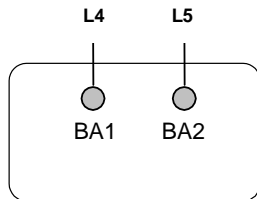
Collegamento alta velocità  
*Connection high speed*  
Connexion grande vitesse  
*Schaltung Hohe Drehzahl*  
Conexiòn alta velocidad



Collegamento bassa velocità  
*Connection low speed*  
Connexion petite vitesse  
*Schaltung Niedrige Drehzahl*  
Conexiòn baja velocidad



Collegamento freno - *Connection brake* - Connexion frein -  
*Schaltung Bremse* - Conexiòn freno



L1 - L2 - L3 = Linea - *Supply* - Reseau - *Netz* - Red

Per invertire la rotazione invertire due fasi - *To change the rotation reverse two phases* - Pour changer le sens de rotation inverser deux phases - *Zur Drehrichtungsänderung zwei Phasen vertauschen* - Para invertir el sentido de rotación invertir dos fases

L4 - L5 = Linea - *Supply* - Reseau - *Netz* - Red

Freno monofase C.A. con alimentazione separata - *A.C. single phase brake with supply disjoined* - Frein monophasé C.A. avec alimentation sépare - *Ein-Phasen Bremse mit separatem Anschluß* - Freno monofásicos C.A. con reten desunida