

Schema di collegamento - *Connection diagram* - Schemas de branchement - *Schaltplan* - Esquemas de conexiòn

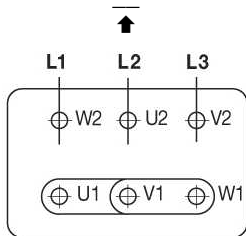
cemp

Flameproof
Motors

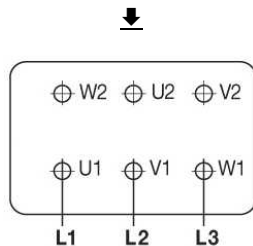
DTE 01/01/2004
SC-02-T-2v-1a

Motori trifase due velocità, un avvolgimento – *Three phase motors two speeds, one winding* – Moteurs triphasé deux vitesses, un enroulement – *Drehstrommotor zwei Drehzahlstufen, eine Wicklung* – Motores trifásico dos velocidades, un bobinado

Collegamento alta velocità - *Connection high speed* - Connexion grande vitesse - *Schaltung Hohe Drehzahl* - Conexiòn alta velocidad



Collegamento bassa velocità - *Connection low speed* - Connexion petite vitesse - *Schaltung Niedrige Drehzahl* - Conexiòn baja velocidad



L1 - L2 - L3 = Linea - *Supply* - Reseau - *Netz* - Red

Per invertire la rotazione invertire due fasi - *To change the rotation reverse two phases* - Pour changer le sens de rotation inverser deux phases - *Zur Drehrichtungsänderung zwei Phasen vertauschen* - Para invertir el sentido de rotación invertir dos fases